

## Centrifugal Pump

### Features:

Comply with API 610 standard;  
Advanced international mould-pressing technology;  
Super-strong temperature resistance (range: -180°C~220°C);  
Fully enclosed design ensuring no leaking or pollution;  
Super-high wearing resistance and corrosive resistance.

### Recommended Application:

To fields of petroleum chemical, nuclear power, nuclear chemical, military, Li-ion battery, new material, chlorine-alkali, electricity, metallurgy, smelting, pharmacy, pulp& paper, printing and dyeing, textile, food, fermentation, electroplating, acid pickling, environmental protection, water treatment, etc.



## Pneumatic Pump (PP/Metal)

### Features:

Adoption of advanced European technologies;  
Immersible in fluid during operation;  
Able to transport highly viscous fluids;  
Selectable different materials as per fluids;  
Anti-corrosive external structure avoiding leaking.

### Recommended Application:

To fields of petroleum chemical, shipbuilding, painting and coating, water treatment, automobile manufacturing, nuclear power plant, etc.



## Chemical Dosing Package

DPJY-series dosing packages are complete sets of equipment manufactured by Depamu through research and development strictly following process specifications combining with the practical situation in China based on introduction of advanced production processes and technologies from America, Germany, Japan, etc. The series are targeted at clients in various industries with production automation requirement such as petroleum, chemical, natural gas, oil refining, water supply, thermal electricity, nuclear, pharmacy, food, etc., and released in order to meet market needs and provide convenience for wide clients. Depamu dosing packages in complete sets with advanced processes, highly automated, easy to be operated and maintained, can satisfy demands under different operation conditions.



Dosing packages, in multiple specifications and models, can be simply classified according to the number of tanks and pumps: one tank+one pump, one tank+two pumps, two tanks+two pumps, two tanks+three pumps, three tanks+three pumps, and so on, to be chosen by clients based on process requirements. System configuration is designed according to the quantity of metering pumps as well as process interface requirements. Besides, non-standard customized products can be designed and manufactured under special demands of clients.

## Supercritical Fluid Equipment

### Features:

**Purity and Naturalness:** Supercritical CO2 fluid extraction is the cleanest extraction process since no organic solution is used through the whole process, no residual solvent exists in extracted material, preventing existence of harmful substance or environmental pollution during the process of extraction and ensuring purity and naturalness.

**High Efficiency:** Extraction and separation are combined; when CO2 fluid with saturated dissolved matter enters separator, CO2 and extracted material rapidly become two phases (gas-liquid separator) and immediately separate due to pressure decrease or temperature change, rendering high efficiency and low energy consumption, thus improving production efficiency and lowering production cost.

**Safeness:** CO2 is an inactive gas without chemical reaction during extraction process, non-flammable, odourless, non-toxic and highly safe.

**Low Cost:** CO2 featuring low price and high purity can be easily gained, reused and recycled during production, which efficiently lowering production cost.



# Depamu

Depamu (Hangzhou) Pumps Technology Co.,Ltd.

Add: No. 658, 20th Street, Qiantang Area, Hangzhou, China  
P.C : 310088 Tel : +86-571-86878013 Fax: +86-571-86408588  
Http://www.depamu.com Email: international@depamu.com



400-809-6100  
www.depamu.com

# Depamu

## PACESETTER OF FLUID EQUIPMENT IN THE WORLD

Depamu (Hangzhou) Pumps Technology Co.,Ltd.

established in 2003 and located in Hangzhou Qiantang Area, is a high-tech enterprise specialized in R & D, production and sales of main products including metering pumps (plunger type/ mechanical diaphragm type/hydraulic diaphragm type), high pressure process reciprocating pumps (plunger/diaphragm/ hose type), pneumatic diaphragm pumps, screw pumps (single screw/ two screw/ three screw), rotor pumps, anti-corrosion centrifugal pumps, cryogenic pumps, chemical dosing packages, water-steam sampling devices, supercritical fluid equipment, water-treatment equipment, etc.

Through constant technical innovation, the company has been devoted to research and development of fluid transfer equipment since its establishment, and has successfully applied for over 80 technical patents. The company has passed API, CE, ISO 9001, ISO 14001 and ISO 45001 certifications; besides, it serves as a drafter of pump industry standards.

Presently, company products have been widely applied to oil & gas field exploitation, petroleum and gas refining and transportation as well as industries of nuclear power, chemical, electricity, pulp& paper, pharmacy, food, new energy, environmental protection, water treatment, etc. Based on establishment of long-term strategic partnerships with large-scale enterprises like CNPC, SINOPEC, CNOOC, CNNC, etc., products have been exported to over 50 countries and regions including the USA, the UK, France, etc. The company aims to be the most competitive fluid equipment developer, manufacturer and service supplier in the world, and build Depamu into a century-old global brand.



# Enterprise Profile



## Enterprise Qualification Certificates



API Certificate

CE Certificate

GOST Certificate

## Workshop Pictures



# Product Introduction

## Metering Pump Series

### Hydraulic Diaphragm Metering Pump

#### Features:

Comply with API 675 standard;  
Modular design of internal PSV and oil makeup valve ensuring no leaking;  
Diaphragm rupture alarm device preventing accident arising from fluid contact with hydraulic oil in case of diaphragm rupture;  
Various ways of capacity adjustment, including manual, electric, pneumatic and variable-frequency.

#### Recommended Application:

To transport inflammable, explosive, toxic and hazardous liquids, etc.



### Mechanical Diaphragm Metering Pump

#### Features:

Simple structure, convenient operation and high efficiency;  
Advanced design of single/double diagram(s) with high durability.

#### Recommended Application:

To industries of environmental protection, pharmacy, pulp& paper, wastewater treatment, municipal water supply, new energy, etc.



### Plunger Metering Pump

#### Features:

Comply with API 675 standard.

#### Recommended Application:

To transport fluids of high viscosity, high pressure, high temperature, etc.

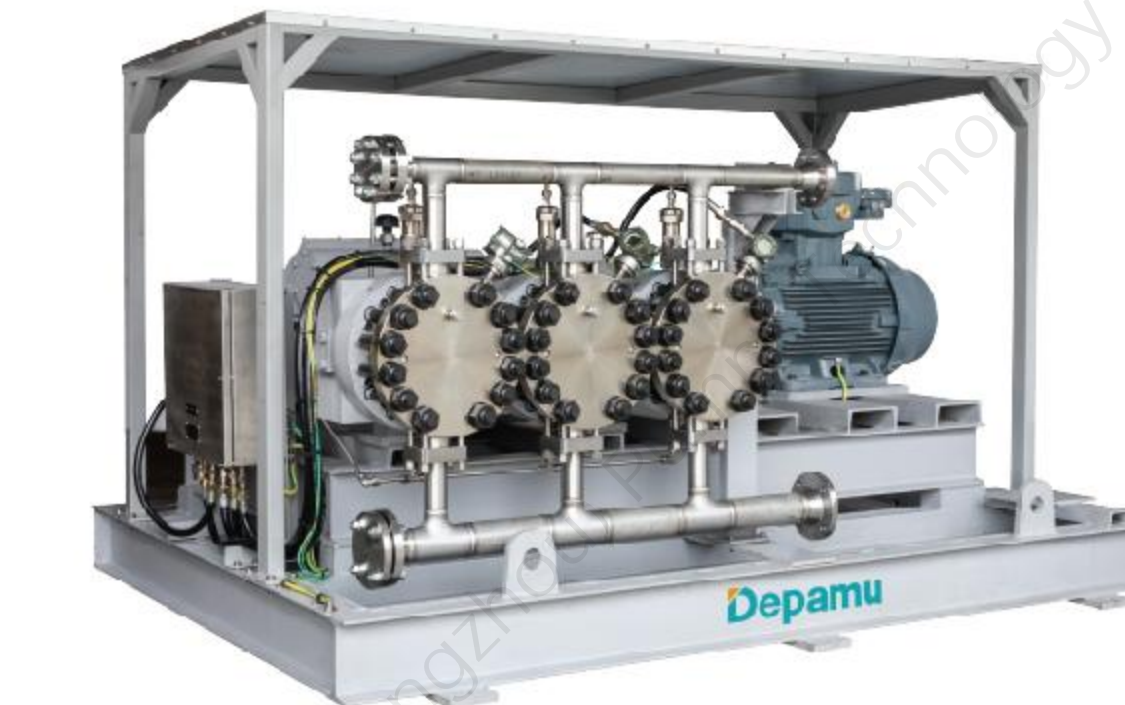
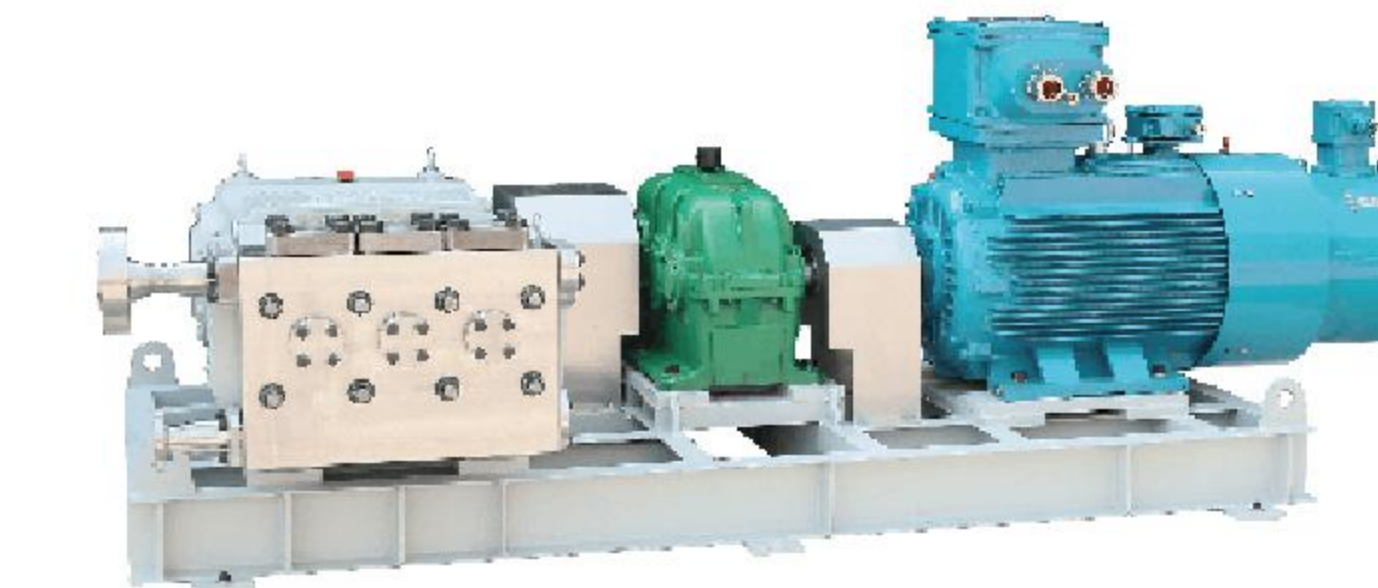


## Reciprocating Pump Series

### High Pressure Process Diaphragm Reciprocating Pump Triplex Plunger High Pressure Reciprocating Pump

#### Features:

Comply with API 674 standard;  
Modular design and intelligent control;  
Simple structure and convenient maintenance;  
Small pulsation, low energy consumption and high stability;  
Customizing as per customer demands.  
Large capacity, high pressure, no leaking, energy conservation and environmental friendliness;



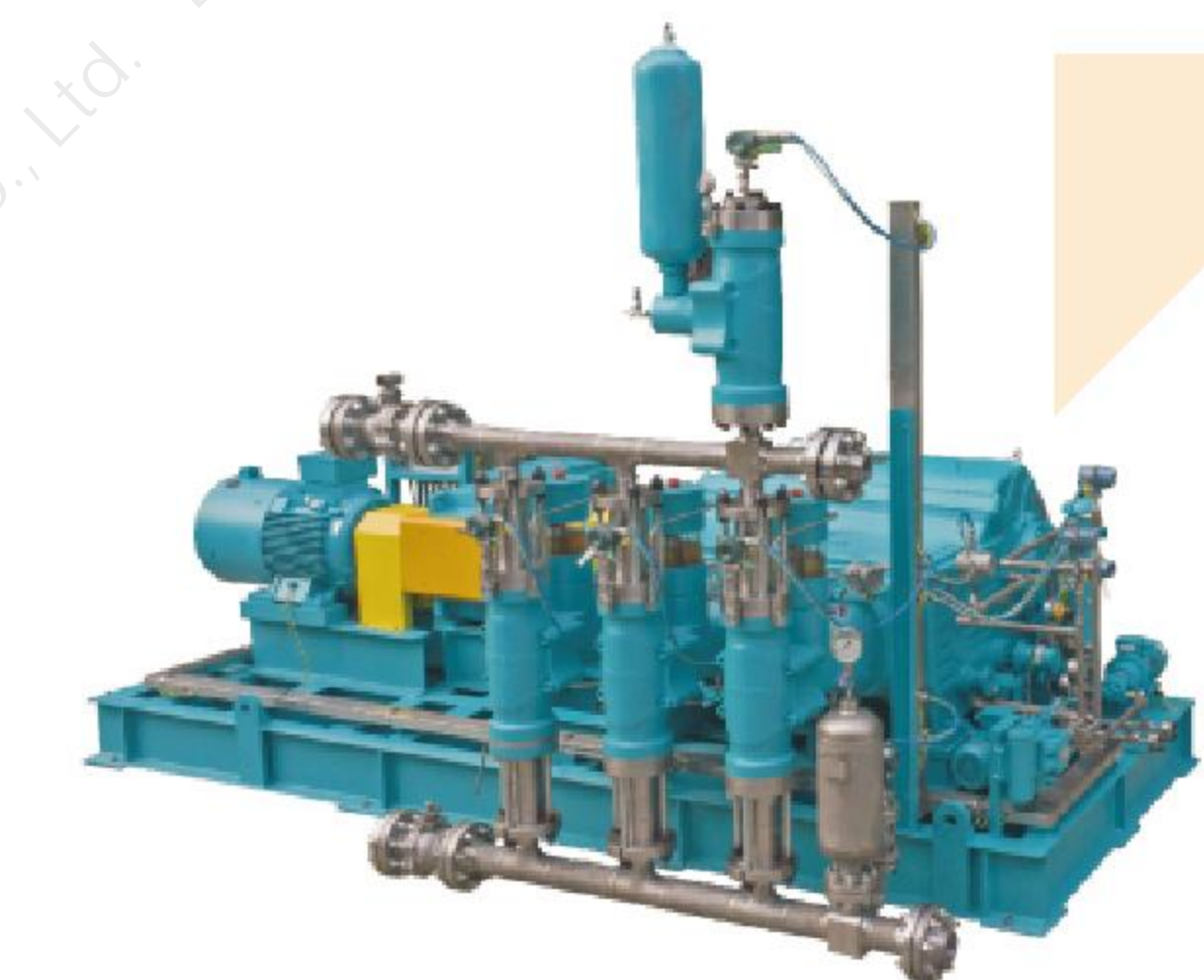
#### Recommended Application:

To inject water, polymer and alcohol in oil and gas fields, to be used as chemical and fertilizer process pump, CO2 pump, cleaning pump, dephosphorizing pump, derusting pump, etc., and especially suitable to transport toxic, corrosive and volatile fluids.

### High-pressure Process Hose Pump

#### Features:

Comply with API 674 standard;  
Direct-through hydraulic end, whole chamber wetted, especially suitable to transport fluids with high viscosity and particles;  
No contact of fluids with pump head ensuring no wearing or leaking;  
Large capacity, low pulsation and high pressure;  
Hose rupture alarm function ensuring easy detection of operation status;  
Modular design, inlet and outlet valve box design ensuring easy maintenance.



#### Recommended Application:

To industries of petroleum chemical, coal chemical, Li-ion battery, new energy, mining, metallurgy, energy, environmental protection, pharmacy, etc., especially suitable to transport fluids with particles or high viscosity.

### Screw Pump (Single Screw / Two Screw / Three Screw)



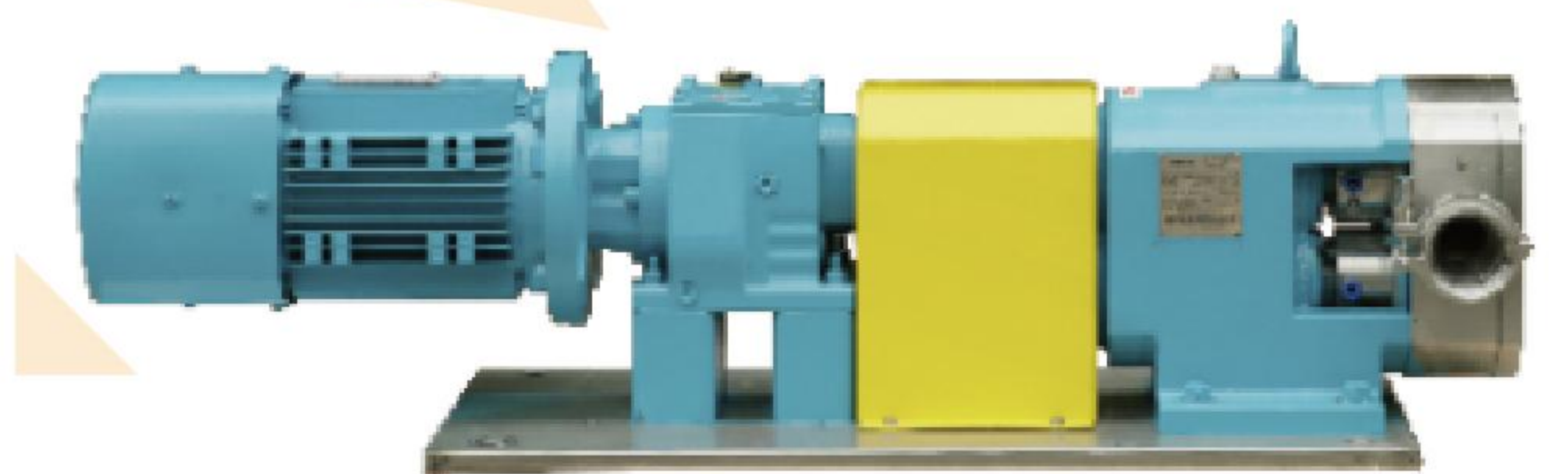
#### Features:

Comply with API 676 standard;  
High viscosity, mixed three-phase transport without pulsation  
Good suction capacity, long service life and low noise

#### Recommended Application:

To fields of petroleum chemical, metallurgy, shipping, wharf, environmental protection, water treatment, food, pulp& paper, electricity, chemical, architecture, etc.

### Rotor Pump (Metal/Rubber)



#### Features:

Comply with API 676 standard;  
Conform to sanitary grade;  
Good suction capacity and large capacity;  
Online cam replacement and allowed operation under no load.

#### Recommended Application:

To fields of petroleum chemical, environmental protection, water treatment, food, pharmacy, pulp& paper, daily chemical, chemical fiber coating, mining, fire fighting, agriculture, vehicle-mounting, etc.