

## 转子泵 Rotor Pump

### 参数范围

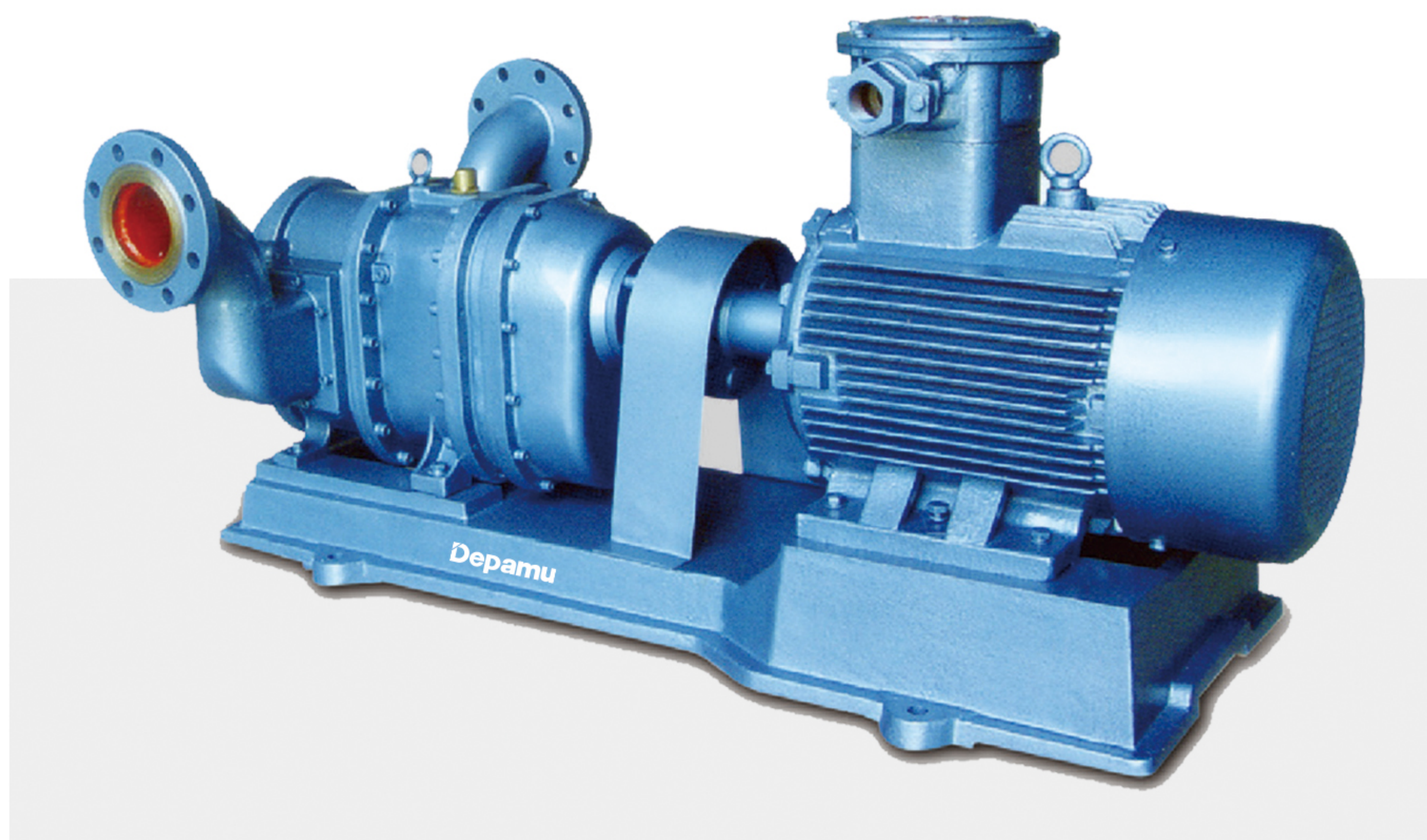
#### Parameter Range

流量范围: 0.2-1500 M3/h

Flow range: 0.2-1500 M3/h

排出压力: 0-1.5 Mpa

Discharge pressure: 0-1.5 Mpa



### 应用范围

#### Application

广泛应用于石油化工、废水处理、饮用水供应、海上油污回收与抢险、树脂、化纤等行业。

It is widely used in petrochemical industry, waste water treatment, drinking water supply, marine oil pollution recovery and emergency rescue, resin, chemical fiber and other industries.

### 主要特征

#### Main Feature

按照API676标准

Comply with API 676 standard

- ◆可输送介质粘度为 $\leq 200$ 万CP,以及含固量为60%的装料,输送流量范围广0.1-3000m3/h。

The transportable fluid has a viscosity of  $\leq 200,000$  CP, and a solid content of 60%, and the transport flow range is 0.1-3000 m3/h.

- ◆无需灌水和辅助装置的超强的自吸能力,最大自吸9米。

Super self-priming capacity without irrigation and auxiliary devices, maximum self-priming 9 meters.

- ◆双支撑更稳定,输出压力可达1.8Mpa, 多级泵可达3.0Mpa。

The double support is more stable, the output pressure can reach 1.8Mpa, and the multi-stage pump can reach 3.0Mpa.



## ► 主要特征

### Main Feature

- ◆无堵塞及多种转子形式,保证了不同物料的高通过率。

最大通过不可压缩物料直径80mm。

No clogging and multiple rotor forms ensure high throughput of different materials. The maximum through incompressible material is 80mm in diameter.

- ◆输送平稳,脉动小,可输送固、液、气混合介质。

Smooth transmission, small pulsation, and the mixed fluid of solid, liquid and gas can be transported.

- ◆三元流精模及五轴联动工艺,高效、低噪。

Three-dimensional flow precision die and five-axis linkage process, ensure high efficiency and low noise.

- ◆可以正反转, 特别适合装料和卸料场合。

Rotation can be reversed, especially suitable for loading and unloading occasions.

- ◆结构紧凑, 易损件少, 故障率低。

Compact structure, less wearing parts and low failure rate.

- ◆在线维修设计, 维护无需拆卸管路。

Online maintenance design, maintenance does not require disassembly of the pipeline.

- ◆低转速10-650r/min, 微磨损,并配备轴向径向耐磨、耐腐蚀衬套,运行寿命更长。

Low speed 10-650r/min, micro-wear, equipped axial and radial wear-resistant, corrosion-resistant bushing for longer operating life

- ◆保温冷却,和安全阀及其他配置保证了特殊工况的工艺要求。

Heat preserving or cooling, and the safety valves and other configurations ensure process requirements for special conditions.

- ◆调节转速即可调节流量的便捷控制,适合需要流量变化的工艺要求。

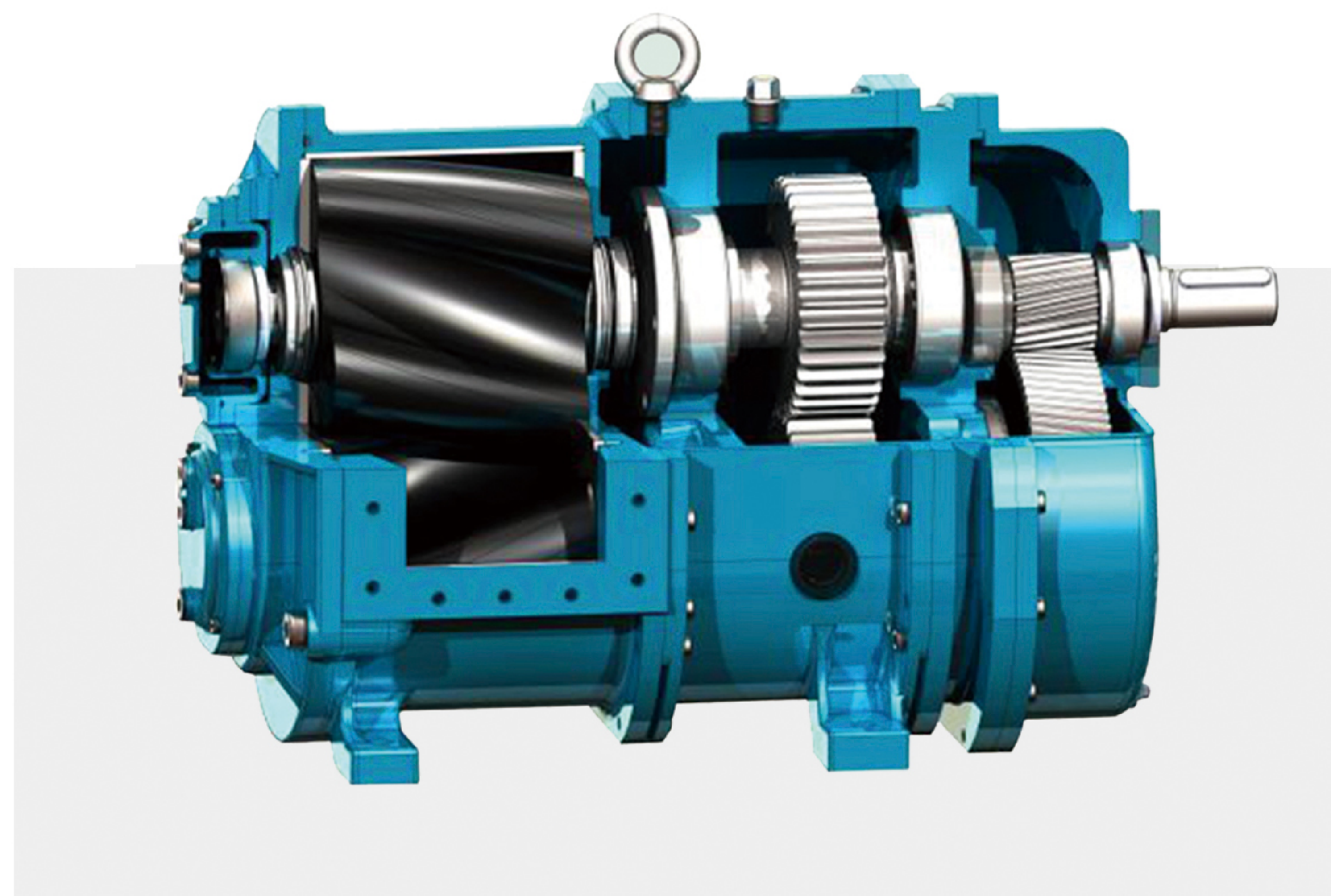
The flow rate can be easily controlled by adjusting the rotating speed, which is suitable for the working condition which requires flow change.

- ◆适合剪切敏感介质的输送, 如液体炸弹等特种物料输送。

It is suitable for the transportation of shear sensitive media, used for special materials such as liquid bombs and etc.

- ◆应用范围广, 适合性强, 在流量和压力范围内, 采用特殊材质和特殊转子形式的泵可以满足不同工况要求。

It has a wide range of applications and strong suitability. Within the range of flow and pressure, pumps with special material and rotor type can meet the requirements of different working conditions.



## 德帕姆(杭州)泵业科技有限公司 Depamu (Hangzhou) Pumps Technology Co.,Ltd.

地址: 中国杭州经济技术开发区20号大街658号 邮编: 310018  
Add: No.658,20th Avenue Hangzhou Economic & Technology  
Development Zone, Hangzhou,China P.C:310018  
电话/Tel:+86-571-86400588 86403988  
传真/Fax:+86-571-86408588  
Http://www.depamu.com E-mail:depamu@depamu.com

